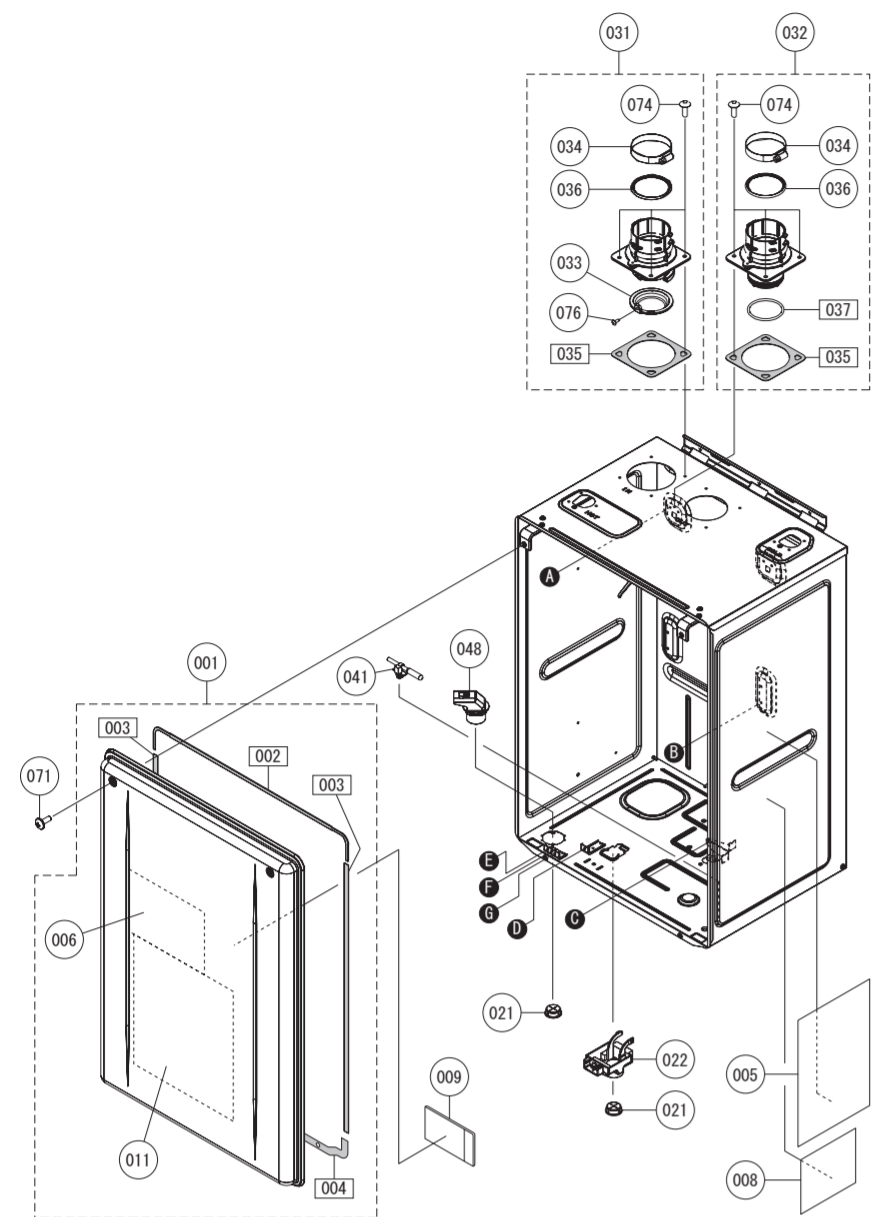


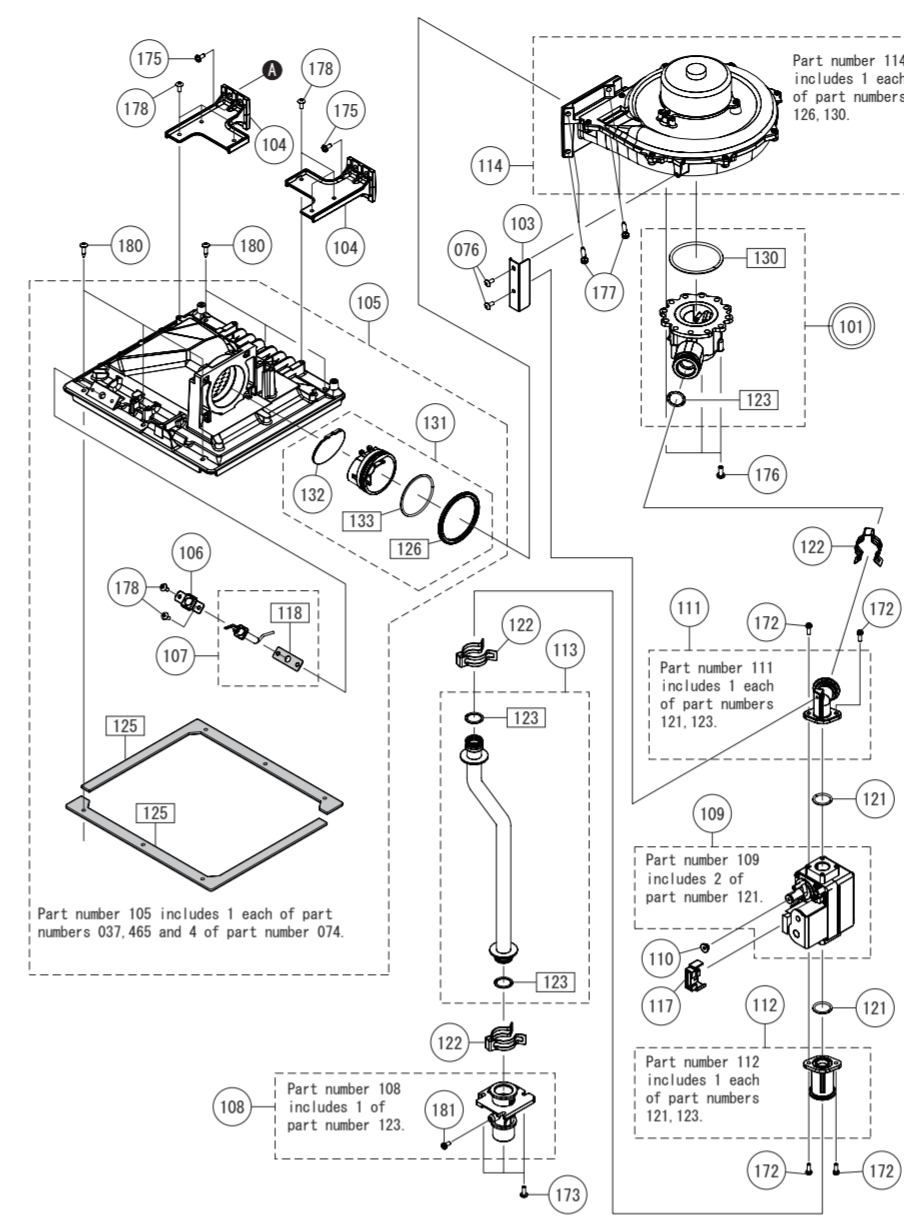
External outfitting Series UT™



External outfitting Series UT™

Part Nos	Part Names	Order Nos	Q'ty/unit
001	Front Cover - GQ-C3260WX-FF US	SKJ72M	1<EZ Series> 1<OT Series>
002	Gasket - Front Cover Top	FABL011	1
003	Gasket - Front Cover Sides	CVAL004	2
004	Gasket - Front Cover Top and Bottom	APR015	1
005	Label - Outside Front Cover Caution Label	ELV003	1
006	Label - Inside Front Cover Caution Label	EYS006	1
008	Label - Name Plate DV/OD	FDM151	1
009	Parts List/Technical sheet	FDM251	1
011	Wiring Diagram	FDM002	1
021	Wire Grommet - Rubber	CXA026	2
022	External Remote Terminal Block	EBTA017	1
031	Intake Flue w/ O-Ring and Gasket (SET)	SKJ71M	1
032	Exhaust Flue w/ O-Ring and Gasket (SET)	SKJ71M2	1
033	Filter - Intake Air	FABF101	1
034	Clamp - Exhaust Pipe	FABF108	2
035	Gasket - Exhaust Flue	FABL101	2
036	O-Ring - Exhaust Pipe	FABL102	2
037	O-Ring - Exhaust Flue	FABL103	1
041	Thermistor - Air	EZWH101	1
048	Wiring Through Way	EGLA026	1
071	Screw - Front Cover with washer MAX12 S410		
074	Screw - Pre-Coated Machined MAX12 S410		
075	Screw - Long Mounting Machine MAX12 S430		
076	Screw - Remote Terminal MAX10 S430		

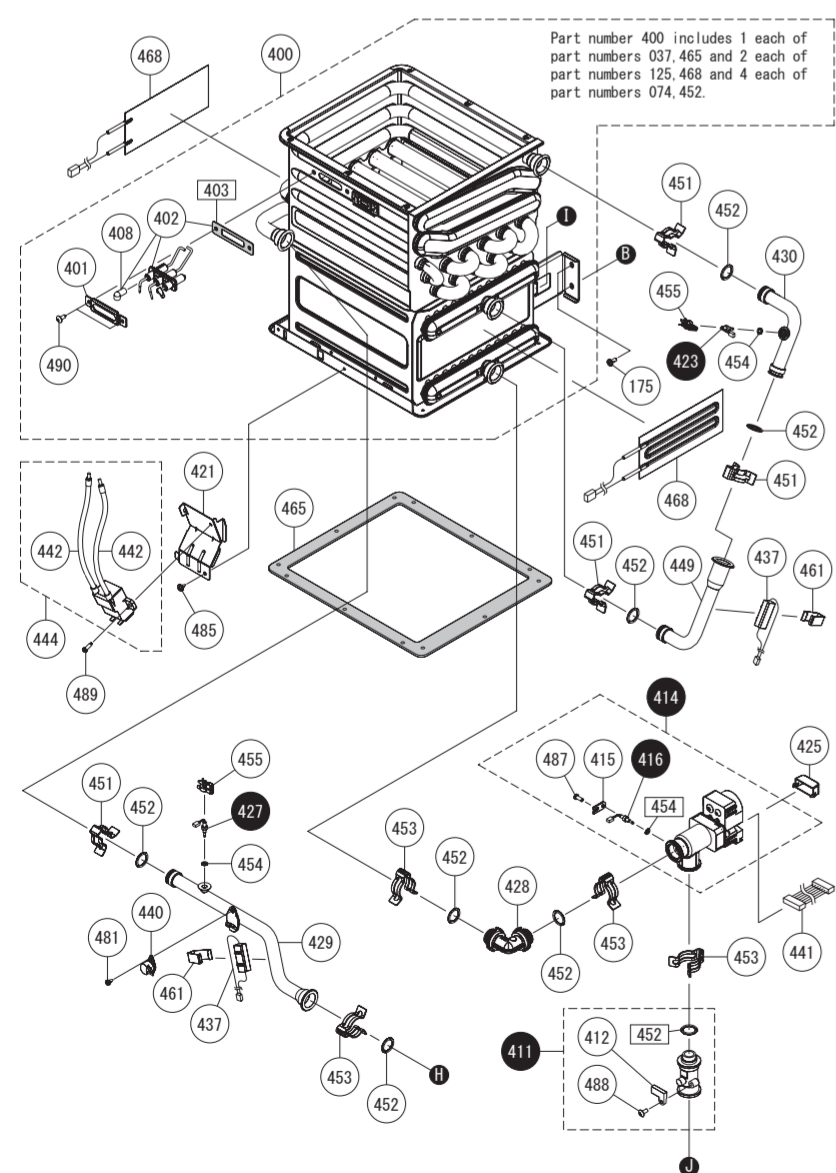
Combustion unit and gas route Series UT™



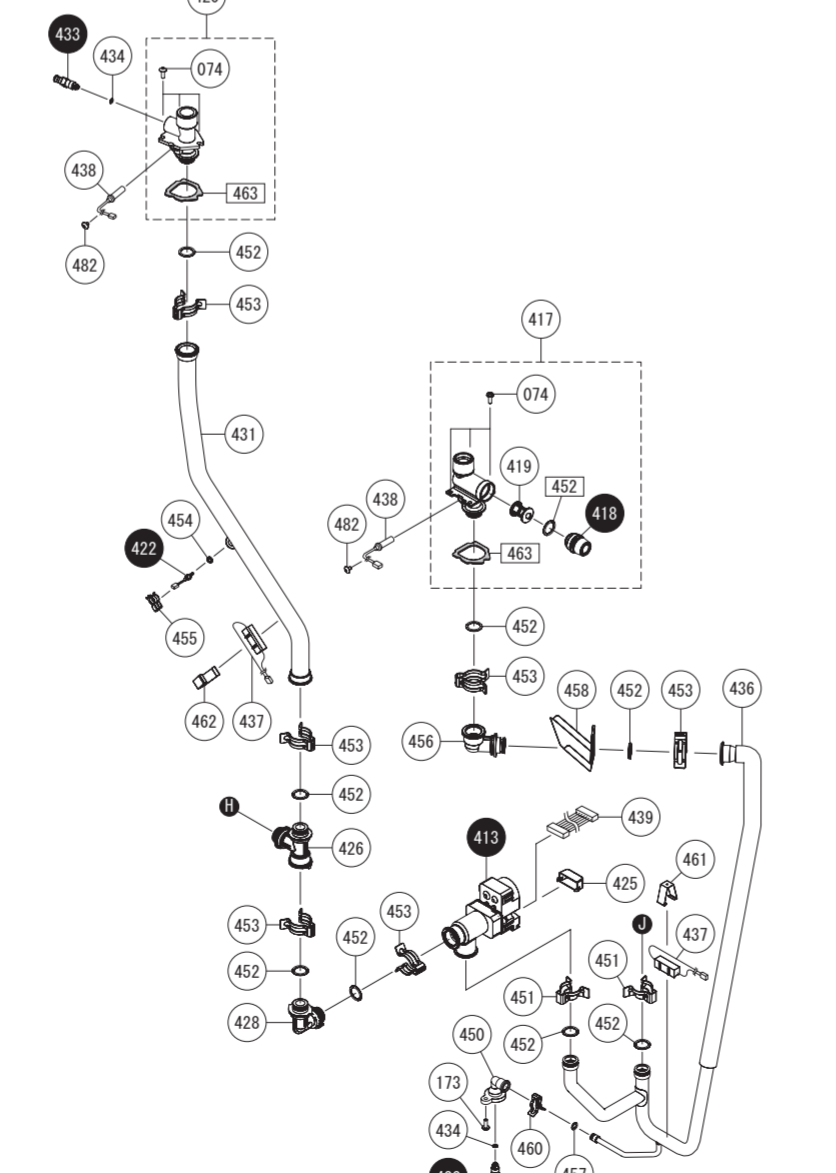
Combustion unit and gas route Series UT™

Part Nos	Part Names	Order Nos	Q'ty/unit
101	Venturi 199kbtuh - LP (SET)	SKJ72M2	1<LP> 1<NG>
103	Mounting Plate - Gas Valve	FDM101	1
104	Mounting Plate - Chamber	FAB0031	2
105	Burner Chamber (SET)	SKJ72M4	1
106	Mounting Plate - Flame Lifting Detection	FDM0314	1
107	Flame Lifting Detection w/ Gasket	SKJ720D	1
108	Inlet Gas Connection w/ Screw (SET)	SKJ71UX	1
109	Gas Valve (SET)	SKJ71M8	1
110	Cover - Offset Adjustment	FAB0311	1
111	Gas Valve Outlet Connector (SET)	SKJ72MR	1
112	Gas Valve Inlet Connector (SET)	SKJ71VX	1
113	Gas Pipe (SET)	SKJ72MS	1
114	Fan Motor w/ Housing	SKJ72MS	1
117	Cover - Gas Valve Connector	FABJ032	1
118	Gasket - Flame Lifting Detection	FDM020	1
121	O-Ring - P20	2192004	2
122	"C" Clamp - 1/8"	3340407	3
123	O-Ring - P18	2110903	3
125	Gasket - Burner	FDM002	2
126	Gasket - Chamber Inlet	FDM004	1
130	O-Ring - Venturi - φ60	FABL017	1
131	Non-return valve (SET)	SKJ7211	1
132	Non-return valve cap	FDM042	1
133	O-ring - Non-return valve	FDM005	1
172	Screw - Long Mounting Machine with Spring Washer MAX12 S430		
173	Screw - Long Machine MAX12 S410		
175	Screw - Medium Machine 4X10 S410		
176	Screw - Mounting Machine 45X12 S430		
177	Screw - Long Mounting Machine 45X25 S430 Scoat		
178	Screw - Medium Machine MAX10 S410 for Aluminum		
179	Screw - Short Machine 3X35 S410 for Aluminum		
180	Screw - Truss Head Self Drilling Tapping MAX18 S410		
181	Screw - Inlet and Manifold Gas M4X8		

Hot-water feed route 1 EZ111DV (GQ-C3260WX-FF US)
EZ98DV (GQ-C2860WX-FF US)
UT199DV (GQ-C3260WX-FF PB US)



Hot-water feed route 2 EZ111DV (GQ-C3260WX-FF US)
EZ98DV (GQ-C2860WX-FF US)
UT199DV (GQ-C3260WX-FF PB US)



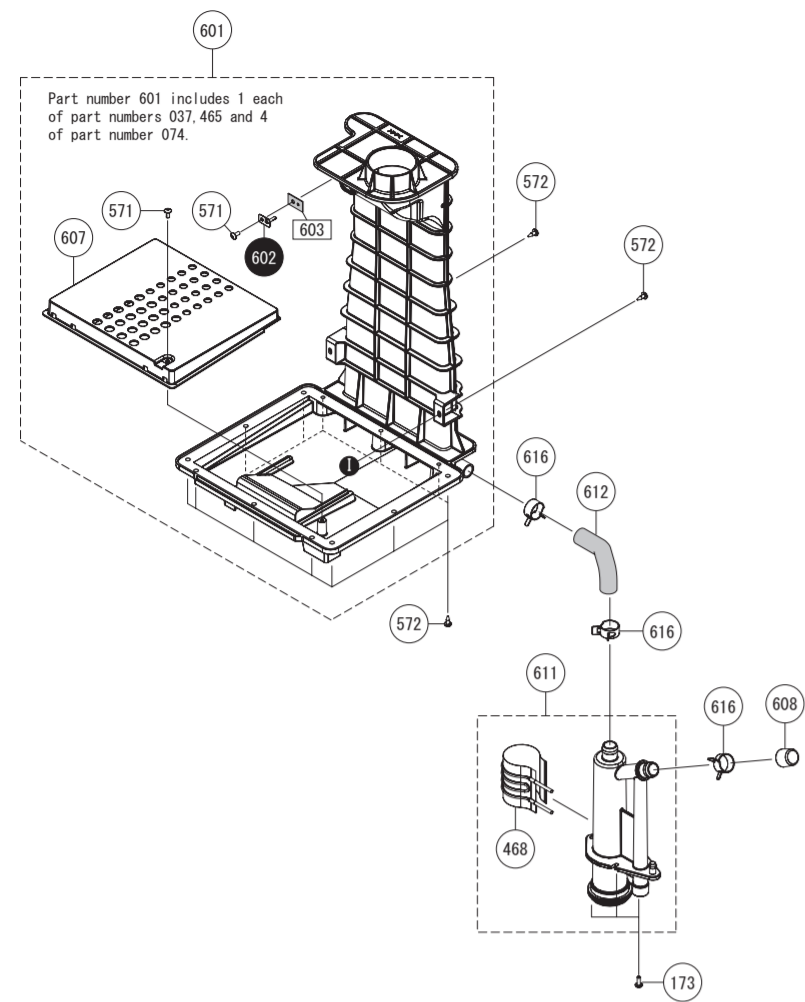
Hot-water feed route EZ111DV (GQ-C3260WX-FF US)
EZ98DV (GQ-C2860WX-FF US)
UT199DV (GQ-C3260WX-FF PB US)

Part Nos	Part Names	Order Nos	Q'ty/unit
400	Heat Exchanger Kit (SET)	SKJ72M	1
401	Mounting Plate - Ignition Plug	FDM065	1
402	Ignition Plug w/ Gasket	SKJ72MT	1
403	Gasket - Ignition Plug (HEX)	FDM009	1
408	Silicon Sieve	FDM052	1
411	Water Flow Sensor (SET)	EDG101	1
412	Magnetic Sensor	DAND019	1
413	Water Servo - Bypass (SET)	ETFD050	1
414	Water Servo - In (SET)	FMB001	1
415	Thermistor Holding Plate	ALS0088	1
416	Thermistor - Red	EZM0002	1
417	Inlet Water Connection (SET)	SKJ72MY	1
418	Water Filter Cap	DTJ0006	1
419	Water Filter	F6B0032	2
420	Outlet Water Connection (SET)	SKJ72M2	1
421	Mounting Plate - Igniter	FDM015	1
422	Thermistor - Pink	EZM0003	1
423	Thermistor - Blue	EZM0001	1
425	Wire Cover - Servo	EBTD023	2
426	Water Connector - T-Elbow	FDM017	1
427	Thermistor - Yellow	EZM0004	1
428	Water Connector - Elbow	FDM016	2
429	Pipe - Primary SS HEX to T-Elbow	FDM005	1
430	Pipe - Secondary SS HEX to Primary SS HEX	FDM023	1
431	Pipe - T-Elbow to Outlet Water Connection	FDM003	1
433	Drain Cock	GRD003	2
434	O-Ring - High Temp P3	SAD6633	2
436	Pipe - Elbow to Water Flow Sensor	FDM031	1
437	Freeze Prevention Heater - Rectangle	ERH0002	4
438	Freeze Prevention Heater - Round Short	ERH0003	2
439	Wiring Harness - Bypass Water Servo	ETJ0033	1
440	High Limit Switch - 194	FABH001	1
441	Wiring Harness - Main Water Servo	JBSJ024	1
442	High Voltage Igniter Wire L175	ALSJ078	2
444	Igniter (SET)	SKJ7219	1
449	Pipe - Secondary SS HEX to Primary SS HEX	FDM025	1
450	Drain Connection - 1/4" tube	GBND018	1
451	"C" Clamp - Water Pipe 16-25	SAD6593	6
452	O-Ring - High Temp P16	3223302	17
453	"C" Clamp - Water Pipe 16A	6340300	10
454	O-Ring - Thermistor High Temp P4	3223709	4
455	"C" Clamp - Thermistor	CRD0055	3
456	Water Connection Elbow	JBSD001	1
457	O-Ring - High Temp P6	3264408	1
458	Cover - Pipe-Inlet Water	FDM013	1
460	"C" Clamp - 1/4" tube 1F-13	SAD6594	1
461	Clamp - Freeze Prevention	ANML001	3
462	Clamp - Freeze Prevention	ELVL011	1
463	Gasket - Connection	FDM008	2
465	Gasket - Exhaust Duct	FDM003	1
468	Freeze Prevention Heater - Condensate Container	ETRH004	3

Hot-water feed route EZ111DV (GQ-C3260WX-FF US)
EZ98DV (GQ-C2860WX-FF US)
UT199DV (GQ-C3260WX-FF PB US)

Part Nos	Part Names	Order Nos	Q'ty/unit
481	Screw - Small Tapping w/o collar M4X8 S410		
482	Screw - Short Machined M4X6 S410		
485	Screw - Short Tapping M4X8 S410		
486	Screw - Medium Machine MAX10 P5550		
487	Screw - Round Head Medium Tapping MAX10 S410		
488	Screw - Round Head Medium Tapping MAX10 S305		
489	Screw - Long Mounting Machine MAX12 S430		
490	Screw - Truss Head Self Drilling Tapping 4X12 P5550		

Condensate feed route Series UT™



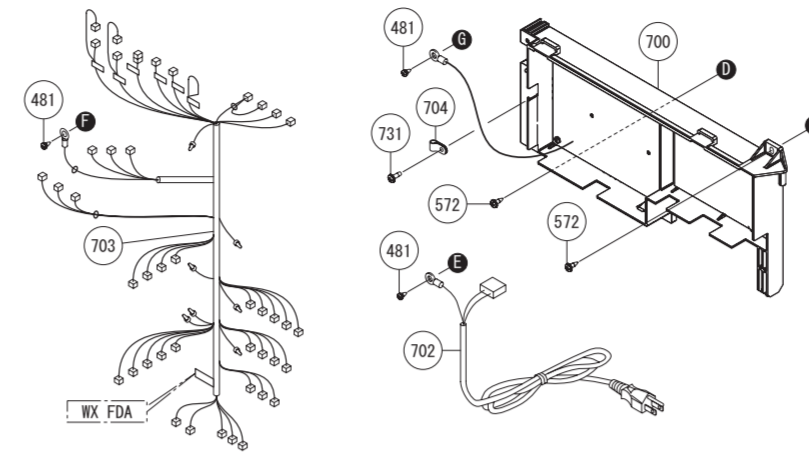
Condensate feed route Series UT™S)

Part Nos.	Part Names	Order Nos.	Q'ty/unit
571	Screw - Medium Tapping MAX10 S410		
572	Screw - Long Tapping MAX12 S410		
601	Exhaust Duct (SET)	SKJ72N7	1
602	Thermistor - Exhaust	ETHR002	1
603	Basket - Exhaust Thermistor	ETHL004	1
607	Condensate Drainage Plate	FDM045	1
608	Drain Cap	FABF056	1
611	Condensate Container (SET)	SKJ71WF	1
612	Drain Hose - SS HEX	FDAF051	1
616	Clamp - Condensate Hose NO. 45	SAD6536	3

Electronic control unit and Remote controller

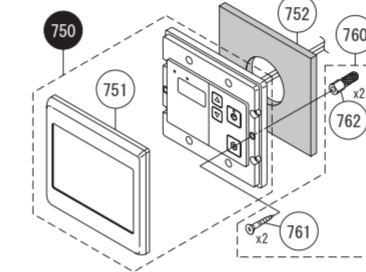
Series UT™

Electronic control unit



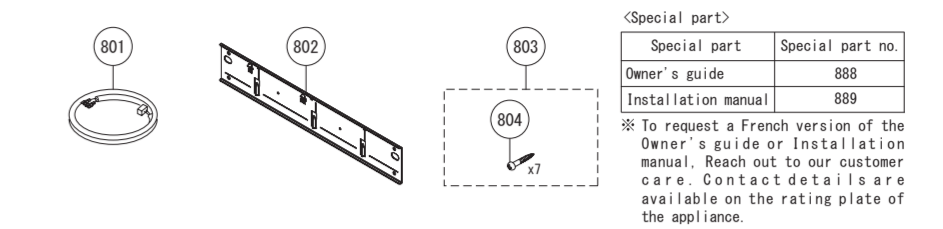
Remote controller

RC-7651M-A US (For EZ Series)
RC-7651M-A NB (For UT Series)



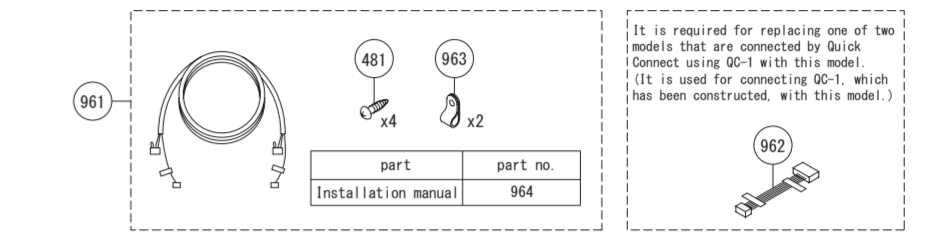
Included Accesories Series UT™

Included Accesories

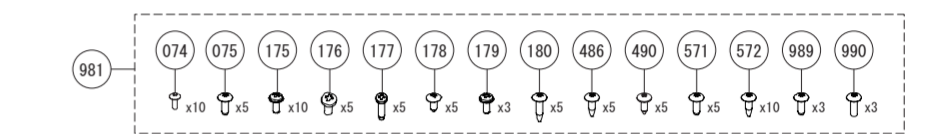


Optional Accesories

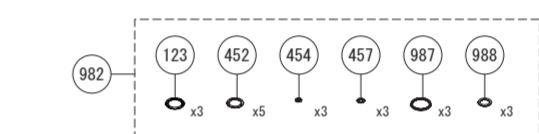
Quick-Connect Cord QC-2



Screw Kit



O-ring Kit



Electronic control unit and Remote controller and Included Accesories
EZ111DV (GQ-C3260WX-FF US) - EZ98DV (GQ-C2860WX-FF US)
UT199DV (GQ-C3260WX-FF PB US)

Part Nos.	Part Names	Order Nos.	Q'ty/unit
700	Circuit Board	SKJ72N2	1
702	Power Supply Cord	ERLU001	1
703	Wiring Harness - GQ-C3260WX-FF US	SKJ72N6	1
704	Wire Clamp - Nylon #4	7287909	1
731	Screw - Remote Terminal Cover MAX12 S410		
750	Remote Controller - RC-7651M-A US (SET)	SHC71H6	1<EZ Series>
751	Remote Controller - RC-7651M-A NB (SET)	SHC71L6	1<UT Series>
752	Cover - Remote	GRKA013	1
753	Mounting Gasket - Remote	QQUA115	1
760	Screw Package - Remote (SET)	QQUA100	1
761	Screw - Round Head Wood M4, 1X25 S305		
762	Dry Wall Anchors 6X25		
800	Box - GQ-C3260WX-FF US	SKJ72N0	1<EZ Series>
801	Box - GQ-C3260WX-FF PB US	SKJ72Z7	1<UT Series>
802	Remote Cord - 6ft	ETHM001	1
803	Wall Mounting Plate	FDAA103	1
804	Wood Screw Set 7	SAD2028	1
804	Screw - Round Head Wood 4, 8X38 S305		
888	Owner's Guide - GQ-C3260WX-FF US	SBB8163	1<EZ Series>
888	Owner's Guide - GQ-C3260WX-FF PB US	SBB8190	1<UT Series>
889	Installation Manual - GQ-C3260WX-FF US	SBB8164	1<EZ Series>
889	Installation Manual - GQ-C3260WX-FF PB US	SBB819E	1<UT Series>
961	Quick Connect Cord - QC-2	Q706377	1
962	Adapter - QC-1 to QC-2	S464672	1
963	Wire Clamp - Nylon #3	7223901	2
964	Installation Manual - QC-2	SA08992	1
981	Screw Kit	SKJ72N0	1
982	O-Ring Kit	SKJ72N1	1
987	O-Ring - High Temp P22	7573308	3
988	O-Ring - High Temp P12.5	3359808	3
989	Screw - Short Mounting Machine with Spring Washer M3X8 S430		
990	Screw - Round Head Short Tapping M5X8 S410		

Procedure for Flushing the Heat Exchanger

This procedure is only intended for use by a qualified service professional or authorized Service Representative. Any unauthorized use of this procedure may result in voiding the warranty. Reach out to our customer care for additional support. Contact details are available on the rating plate of the appliance.

If the alarm code "C1#" is flashing on the Remote Controller, it means there is Scale Build-up in the Heat Exchanger. To prevent damage to the Heat Exchanger from Scale Build-up, the Heat Exchanger needs to be flushed** to remove the Scale Build-up. Damage to the water heater due to Scale Build-up is not covered by the water heater's warranty. To clear the alarm code "C1#" the Heat Exchanger must be flushed. If the alarm code "C1#" is displayed and flashing on the Remote Controller, Please contact the contact address of instruction manual.

* Warning indication, # = 1-9

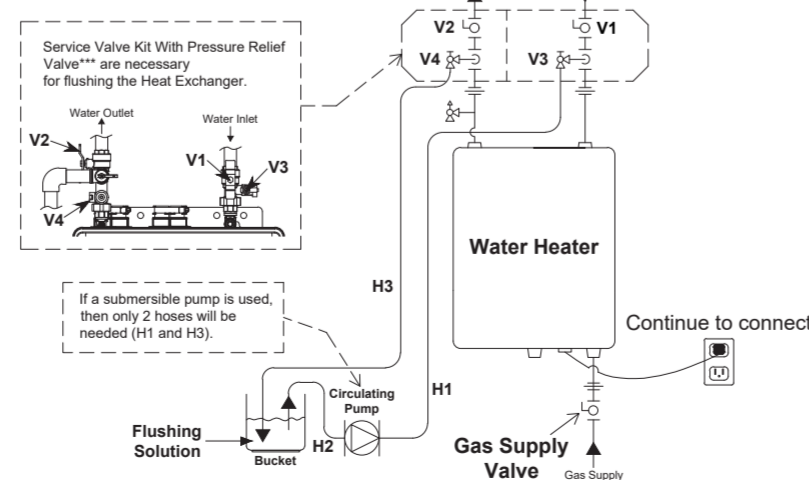
** Connect the blue connector marked "FLUSH" for flushing near the Circuit Board when flushing the Heat Exchanger.

The water heater must remain connected to electrical power when flushing the Heat Exchanger.

Basic Procedure

«Procedure 1. The preparation of the flushing system»

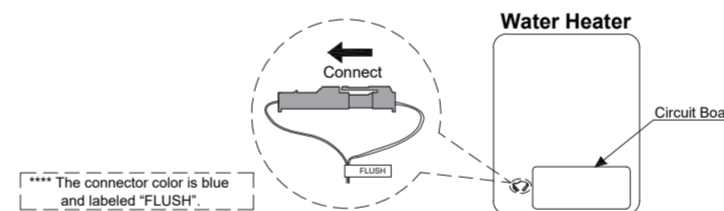
1. Close the gas supply valve.
2. Close the water inlet valve (V1) and the water outlet valve (V2).
3. Connect the one drain hose (H1) to the drain valve (V3), and then the other to the circulating pump.
4. Connect the drain hose (H2) to the circulating pump.
5. Connect the drain hose (H3) to the drain valve (V4).
6. Pour 1 gallon of "Calcium, Lime and Rust Removal Product" and 1 gallon water into the bucket. Recommend "Calcium, Lime and Rust Removal Product" for flushing.
7. Place the both drain hoses (H2 and H3) into the bucket filled with the flushing solution.
8. Open the both drain valves (V3 and V4).



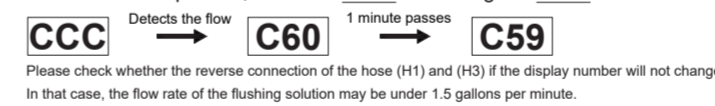
*** Service Valve Kit With Pressure Relief Valve may be purchased as an accessory from an authorized wholesaler. They allow for full diagnostic testing and easy flushing of the system. Refer to appliance's installation manual or reach out to our customer care, if more information is needed for flushing. Contact details are available on the rating plate of the appliance.

«Procedure 2. Flushing the Heat Exchanger - For Single Unit»

1. Open the Front Cover.
2. Connect the blue connector**** marked "FLUSH" for flushing near the Circuit Board.



3. Then the code "CCC" is displayed on the Remote Controller.
4. Turn on the circulating pump to circulate the flushing solution through the water heater for 1 hour at a rate of 1.5 gallons per minute or more.
5. The code "C60" is displayed on the Remote Controller when the water heater detects the flow of the flushing solution. When 1 minute passes, the code "C60" will change to "C59" on the Remote Controller.

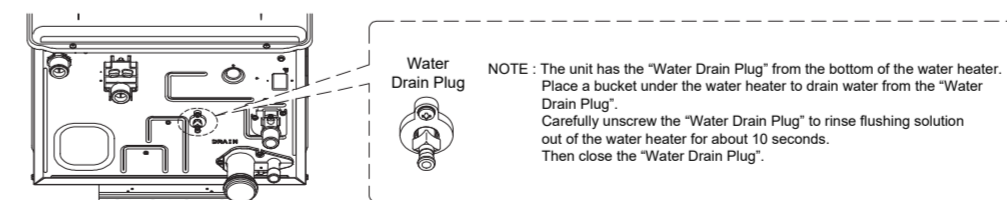


6. When 1 hour passes, the code "C00" is flashing on the Remote Controller. Do not disconnect the blue connector marked "FLUSH" for flushing.
7. Turn off the circulating pump.

«Procedure 3. Cleaning the Heat Exchanger»

The flushing solution needs to be rinsed and cleaned out of the water heater. Below is the way to rinse and clean the flushing solution.

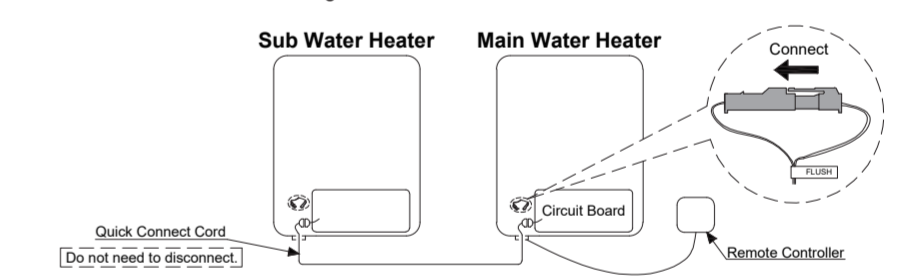
1. Remove both drain hoses (H2 and H3) from the bucket. And then place the drain hose (H3) into the sink or outside to drain.
2. Close the drain valve (V3) and then open the water inlet valve (V1). Do not open the fresh water outlet valve (V2).
3. Clean the water heater with fresh water for 3 minutes or more. (Needs to have enough time to clean the water heater.)



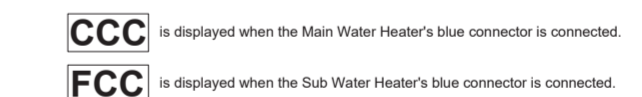
4. Close the drain valve (V4) and then remove the drain hose (H3) from the drain valve (V4).
5. Remove the drain hose (H1) from the drain valve (V3).
6. Disconnect the blue connector marked "FLUSH" for flushing. The code "C00" goes out on the Remote Controller.
7. Close the Front Cover.
8. Open the gas supply valve and water outlet valve (V2).
9. Check for correct operation of the water heater.

In case of the "Quick Connect Multi System Procedure"

1. Connect the blue connector marked "FLUSH" for unit needing to be flushed. (The water heater is isolated from Quick Connect Multi System when the blue connector marked "FLUSH" for flushing is connected. Not need to disconnect the Quick Connect Cord.)



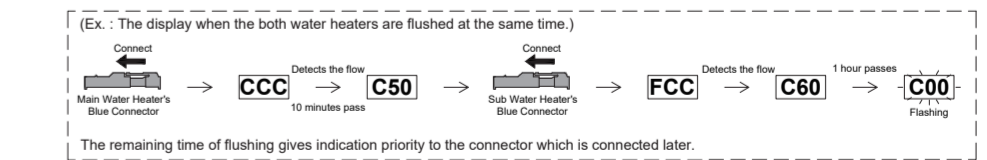
2. Then the code "CCC" or "FCC" is displayed on the Remote Controller.



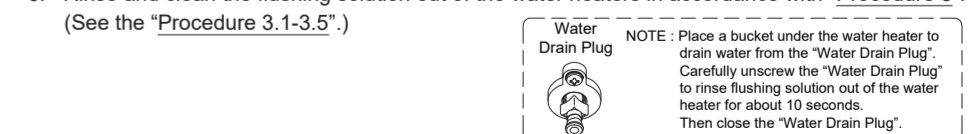
3. Turn on the circulating pump to circulate the flushing solution through the water heaters for 1 hour at a rate of 1.5 gallons per minute or more.

4. When 1 hour passes, the code "C00" is flashing on the Remote Controller.

Do not disconnect the blue connector marked "FLUSH" for flushing.



5. Turn off the circulation pump.
6. Rinse and clean the flushing solution out of the water heaters in accordance with "Procedure 3". (See the "Procedure 3.1-3.5".)



7. Disconnect the "blue connector for flushing". The Code "C00" goes out on the Remote Controller.
8. Close the Front Covers.
9. Open the gas supply valves and water outlet valves.
10. Check for correct operation of the water heaters.

Refer to appliance's installation manual or reach out to our customer care, if more information is needed for flushing. Contact details are available on the rating plate of the appliance.